



# Supporting your Clients - PSCHSM

This document has been designed by Accessable with the intent to support a Webinar for Auckland and Northland EMS Assessors.

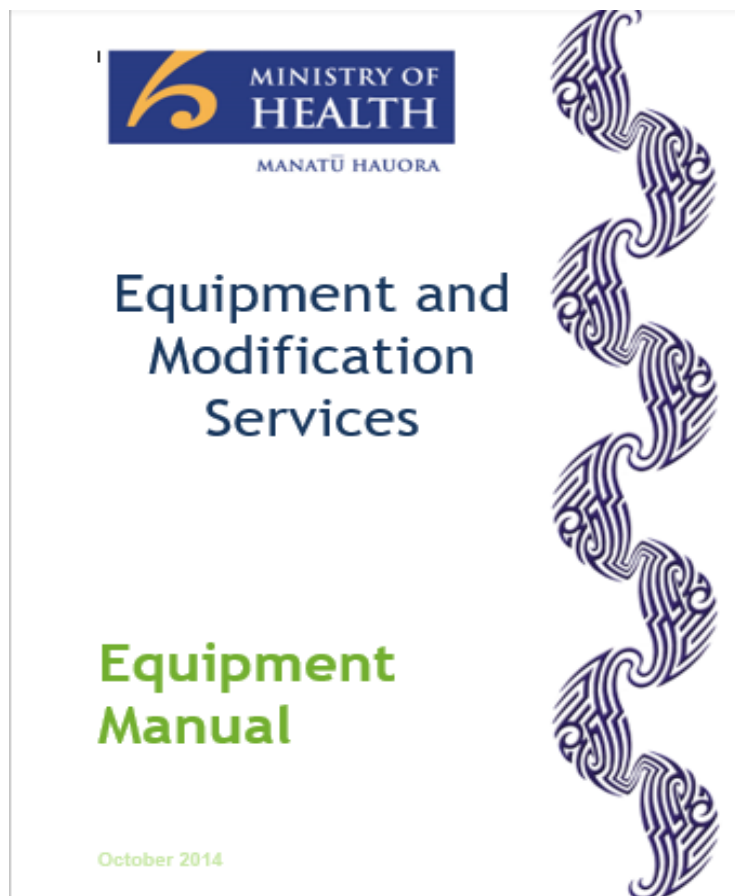
This document is not be used outside this context or distributed to others. Please contact Accessable 0508 001 002 for clarification if needed.

# Content

- Introduction - Bridget Blanks, Katrina Gardiner and Penny Bavage
- EMS Budget and Criteria – Bringing things into focus
- Refresher on pressure care and content to help us help you!
- Band 2 and 3 equipment solutions and discussions
- Questions and Answers



# Bringing things into focus .....



The logo for 'accessible' features the word in a blue serif font, with a green curved arrow graphic looping around the 'a' and 'c'.

# EMS Budget

Fixed Budget \$26 million

Accessible EMS Provider is responsible for management of this budget.



114 Equipment EMS Advices received for May 94 completed with cost savings \$48870.00.



# EMS Criteria

- Eligibility
- Access Criteria
- Essential Disability Related Need
- Cost Effectiveness



Equip'ing your EMS Equipment Advice

<https://www.accessable.co.nz/individual-pages-folder/webinar-equip-ing-your-ems-equipment-advice/>

# Pressure Injury

## What do we know?



# Categories of Pressure Injury

- I - Non blanchable erythema of intact
- II – Partial thickness skin loss with exposed dermis
- II – Partial thickness skin loss with exposed dermis
- IV - Full thickness skin loss and tissue loss

# So which category of pressure injury is shown?





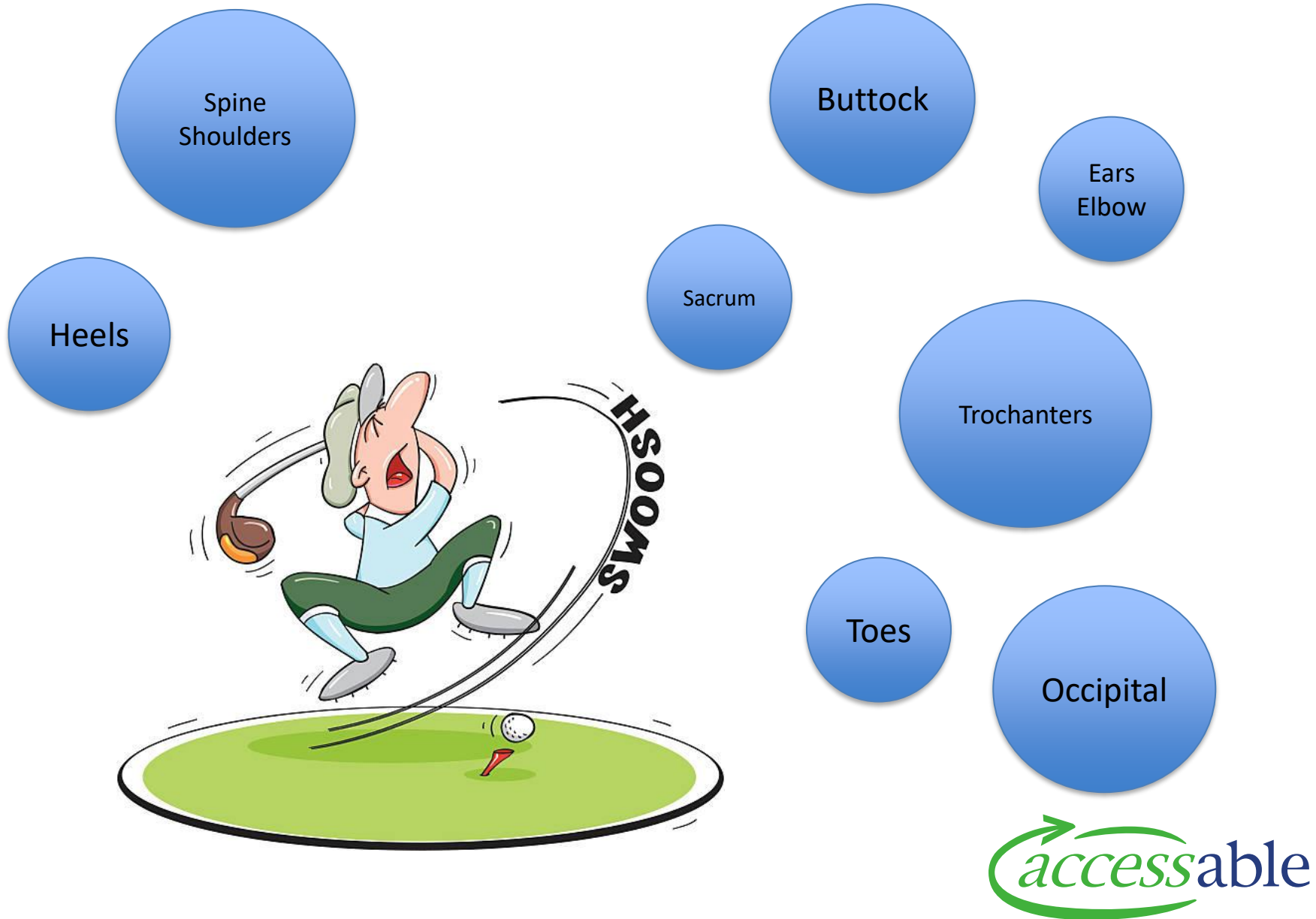
**So which category of pressure injury is shown?**



# So which category of pressure injury is shown?



# BEST SHOT



# SSKIN Bundle of care

**S -Surface**

**S - Skin Assessment**

**K - Keep moving**

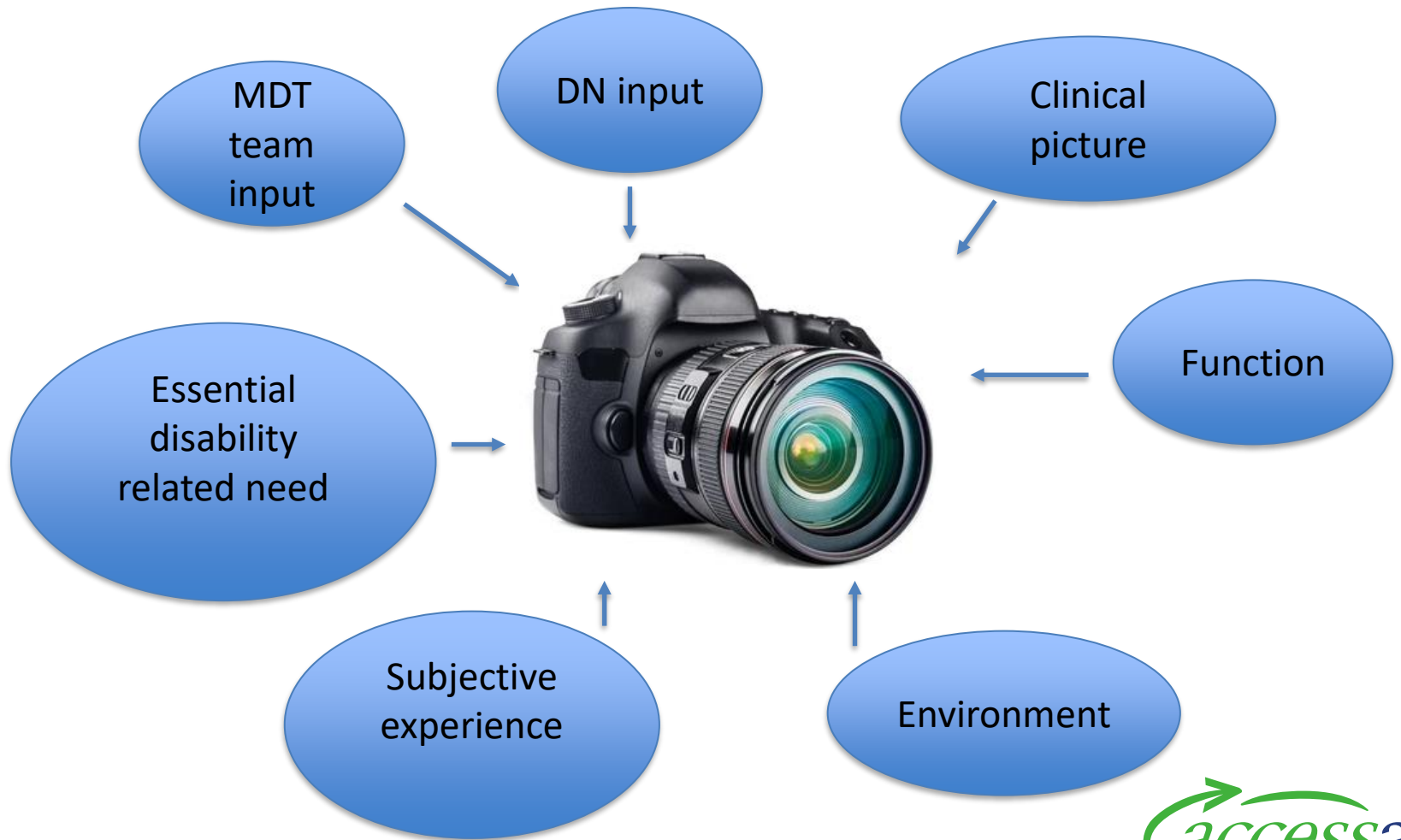
**I - Incontinence**

**N- Nutrition**

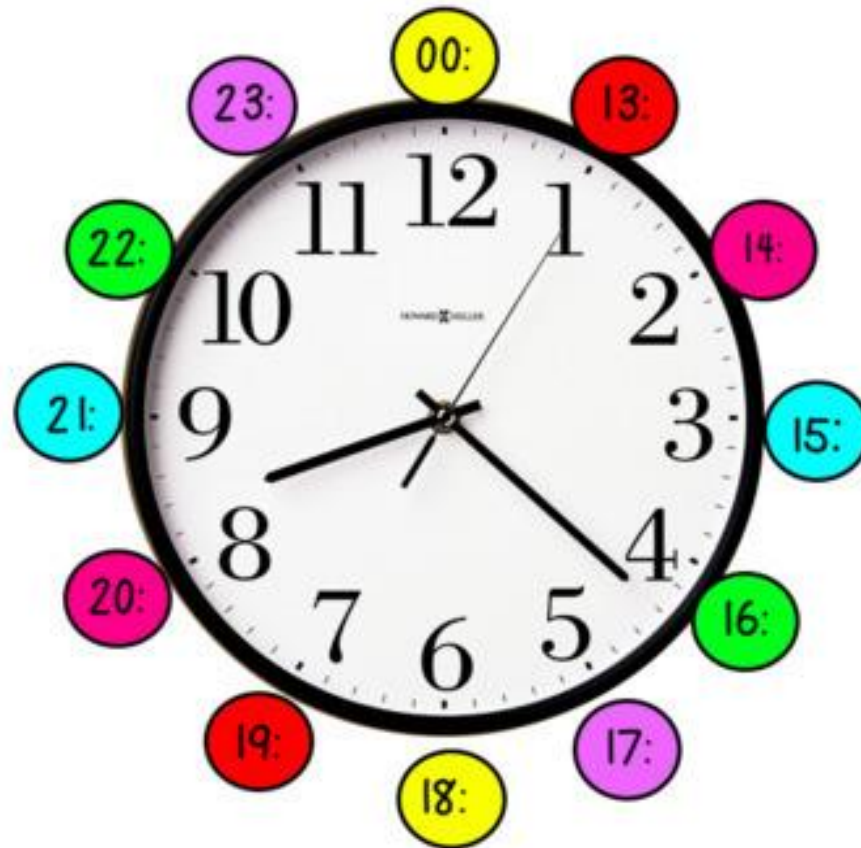
Think.....



# Clinical snapshot of care



# 24-Hour Timeframe



# The Bed

- EMS Criteria and Essential Need
- Functional Considerations





**Filter it  
through**



The logo for 'Accessable' features the word in a blue serif font. A green arrow starts under the 'a', curves around the 'c', and points towards the 's'.



# Solutions to consider



# aSAP Catalogue

asap Portal > Full Catalogue (MOH)

Full Catalogue (MOH)

Access Equipment

Bathroom and Toilet

Bedroom

Bed

Heel - Elbow Protection

Mattress Specialised Bedding

Sensor Mattress

Communication Assistive Technology

BAND SELECTION

☐ Refurb ☐ Trial

SIC code

Product Name Search:

Supplier Code

Search By Keyword 1

Search By Supplier

Search By Keyword 2

Q SEARCH

RESET SEARCH

Item Name	SIC	Supplier Code	Price	Supplier	Band Type	Item Type	
Aeria 5 plus Air Alternating Mattress Overlay	EC930	2130	\$1,868.00	Cubro	Band 2	List	<a href="#">i</a>
Aeria 8 Dynamic Alternating Mattress Replacement System	EC940	2150	\$1,751.00	Cubro	Band 2	List	<a href="#">i</a>
Aeria 8 Pro Dynamic Single Air Alternating Mattress	EC945	2160	\$3,931.00	Cubro	Band 3	List	<a href="#">i</a>
Curocell A4 CX16 85x200x16cm Mattress	EC942	0401-1660	\$2,995.00	Active Healthcare (NZ) Ltd	Band 2	List	<a href="#">i</a>
Curocell A4 CX20 85x200x20cm Mattress	EC946	0401-1690	\$4,150.00	Active Healthcare (NZ) Ltd	Band 3	List	<a href="#">i</a>
Invapress Foam Single Mattress	EC121	PRESS-S2000	\$345.00	Invacare New Zealand	Band 2	List	<a href="#">i</a>

<https://accessablenz.microsoftcrmportals.com/SignIn?ReturnUrl=%2F>



# The Solutions

## Reactive Therapy

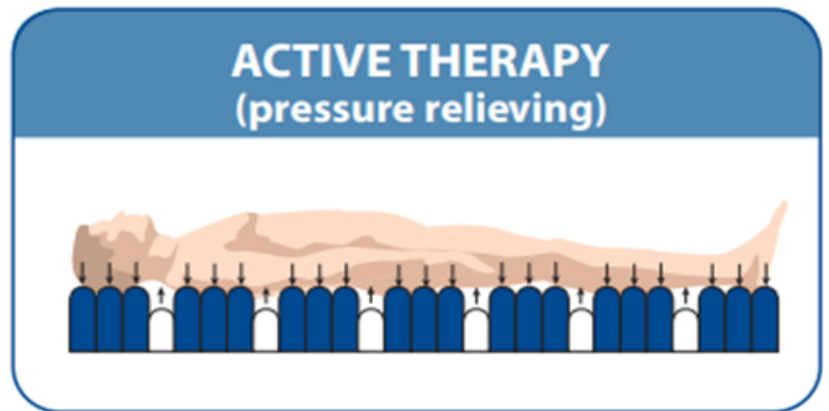
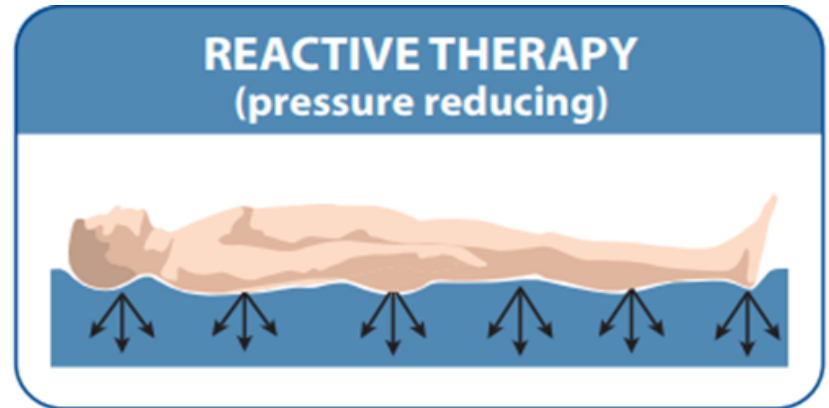
- Foam - Band 2

## Active Therapy

- Air Mattresses - Band 2 & 3

## Active Reactive Therapy

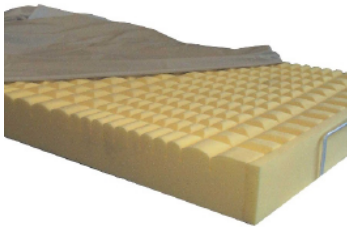
- Hybrid Foam/Air Mix



*accessible*

# MOH Band Mattress

Band 2 - **EC121** - Invapress Foam Single Mattress < \$1000.01



**Description:** Standard Foam Pressure care Mattress Single Size

**Supplier Code:** PRESS-S2000

**Supplier:** Invacare New Zealand

**Weight:** 0.00

**User Weight Capacity:** 130

**Size:** 2000 x 860 x 130mm

**Accreditation:** PSCHSM

Band 2 - **EC123** - Softform Premium 197 Foam Mattress < \$1000.01



**Description:** PREMIER MATTRESS (2000X855X152)

**Supplier Code:** 1486720

**Supplier:** Invacare New Zealand

**Weight:** 0.01

**User Weight Capacity:** 247

**Size:** L1980 x W900 x H152

**Accreditation:** PSCHSM

Band 2 - **EC930** - Aeria 5 plus Air Alternating Mattress Overlay **\$1500.01 - \$2000**



**Description:** AERIA5PLUS ® Specialised Dynamic Mattress - Overlay System Including Custom Carry Bag

**Supplier Code:** 2130

**Supplier:** Cubro

**Weight:** 0.00

**User Weight Capacity:** 160

**Size:** W880xH135xL2000mm

**Accreditation:** PSCHSM

Band 2 - **EC940** - Aeria 8 Dynamic Alternating Mattress Replacement System **\$1500.01 - \$2000**



**Description:** AERIA8 ® Dynamic Alternating Mattress - Replacement System Including Custom Carry Bag.

**Supplier Code:** 2150

**Supplier:** Cubro

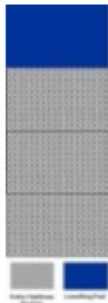
**Weight:** 0.00

**User Weight Capacity:** 200

**Size:** 880x220x2000mm

**Accreditation:** PSCHSM

Band 2 - **EC950** - ROHO Mattress Overlay one section only **\$1000.01 - \$1500**



**Description:** Mattress Section Overlay  
Standard ROHO 51cm x 86cm

**Supplier Code:** MA4000

**Supplier:** Permobil New Zealand Limited

**Weight:** 0.00

**User Weight Capacity:** 0

**Size:** 37.5cm x 86cm x5.5cm

**Accreditation:** PSCHSM

Band 2 - **EC942** - Curocell A4 CX16 85x200x16cm Mattress **\$2500.01 - \$3000**



**Description:** CuroCell A4 CX16 Mattress with cover Stone, 85x200x16cm Type: Alternating pressure mattress replacement system

**Supplier Code:** 0401-1660

**Supplier:** Active Healthcare (NZ) Ltd

**Weight:** 0.00

**User Weight Capacity:** 200

**Size:**

**Accreditation:** PSCHSM

Band 2 - **EC943** - ProCair Single Alternating Air Mattress **\$2500.01 - \$3000**



**Description:** Alternating air mattress replacement

**Supplier Code:** XNAPMPC-R01

**Supplier:** Morton & Perry

**Weight:** 8.00

**User Weight Capacity:** 190

**Size:**

**Accreditation:** PSCHSM

Band 3 - **EC945** - Aeria 8 Pro Dynamic Single Air Alternating Mattress **\$3000.00 - \$4000**



**Description:** AERIA8PRO ® Specialized Dynamic Mattress - Replacement System Including Custom Carry Bag.Generation 4 Model ("Gen 4")

**Supplier Code:** 2160

**Supplier:** Cubro

**Weight:** 0.00

**User Weight Capacity:** 250

**Size:** 880x220x2000mm

**Accreditation:** PSCHSM

Band 3 - **EC944** - Talley Quattro Plus Air Single Mattress **\$4000.00 - \$5000**



**Description:** Talley Quattro Plus Mattress Full Replacement System Complete

**Supplier Code:** MA204

**Supplier:** Permobil New Zealand Limited

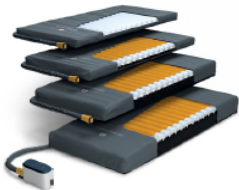
**Weight:** 0.00

**User Weight Capacity:** 200

**Size:** 88Ccmx195cmx18cm

**Accreditation:** PSCHSM

Band 3 - **EC946** - Curocell A4 CX20 85x200x20cm Mattress **\$4000.00 - \$5000**



**Description:** CuroCell A4 CX20 Mattress with cover Stone, 85x200x20cm Type: Alternating pressure mattress replacement system

**Supplier Code:** 0401-1690

**Supplier:** Active Healthcare (NZ) Ltd

**Weight:** 0.00

**User Weight Capacity:** 250

**Size:**

**Accreditation:** PSCHSM



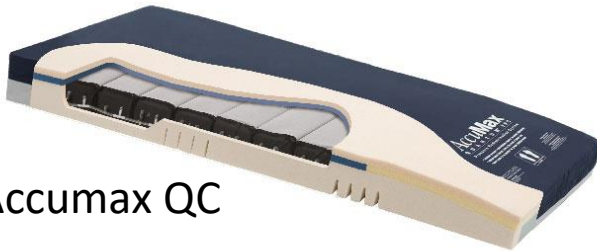


# Active/Reactive options

Dynaform Mercury Advance



Accumax QC



CuroCell Area Zone



Softform Active



AtmosAir 9000



CuroCell Cirrus





# The weight conversation

## What do we know?



# Interesting links

- *New Zealand Wound Care Society*  
<https://www.nzwcs.org.nz/resources/stop-pi-day/clinical-resources>
- *ACC* <https://www.acc.co.nz/assets/provider/pressure-injury-prevention-acc7758.pdf>
- *Disabled Living Foundation Uk*  
<https://www.dlf.org.uk/factsheets/pressure-relief>
- *Invacare Europe – Passionate People*  
<https://www.passionatepeople.invacare.eu.com/top-5-tips-in-choosing-the-right-pressure-redistributing-mattress/>
- *New Zealand Health Quality and Safety Commission*  
<https://www.hqsc.govt.nz/our-programmes/pressure-injury-prevention/>

# More Interesting links

*Ministry of Health* <https://www.health.govt.nz/our-work/diseases-and-conditions/pressure-injuries>

*Health*

*Navigator* <https://www.healthnavigator.org.nz/health-a-z/p/pressure-sores-prevention/>

*New Zealand*

*Spinal Trust* <https://nzspinaltrust.org.nz/resources/pressure-injury-prevention/>

*Mayo Clinic* <https://www.mayoclinic.org/diseases-conditions/bed-sores/symptoms-causes/syc-20355893>

*Braden*

*Scale* <https://www.bradenscale.com/images/bradenscale.pdf>

NZ Suppliers have some amazing resources – look to their websites